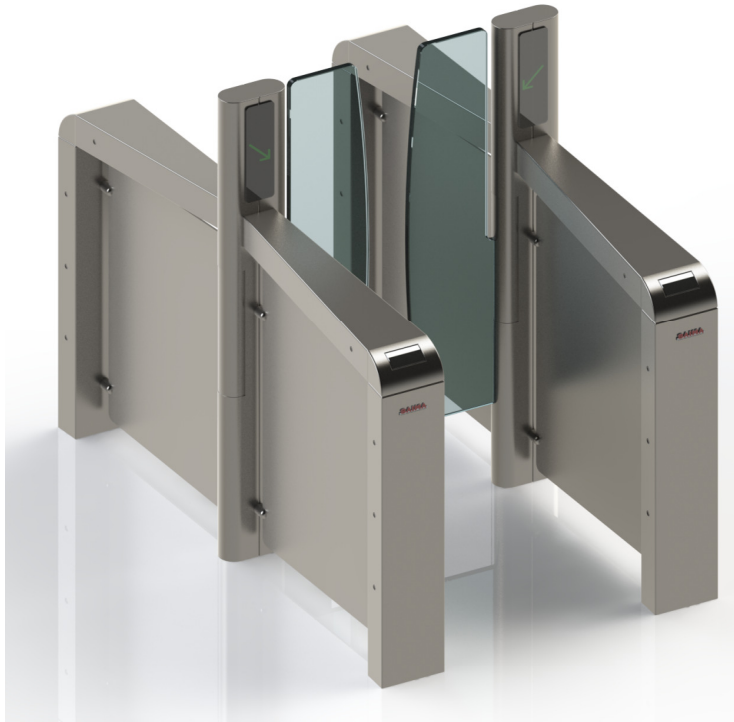


**MOTORIZED GATE**

The **SWING GATE 285** is a motorized gate where the essence of raw materials such as steel and glass are shaped by the typical **ITALIAN STYLE**, to make entrances particularly elegant and secure.

This system for access control is composed by two or more cabinets that through swing glass enable the entrance and exit.

It is possible to have the **SWING GATE 285** with a larger gate in order to respect the disable rule. Moreover the customer can choose different glass height to increase the physical security of the gate.

**FEATURES**

- Predisposition to house recognition system such as badge reader, proximity free hands, biometric etc.,
- Lateral panels made in finely shaped stainless steel
- Swing panel in tempered crystal
- Upper covers made in shockproof, scratch proof material
- Led indicators for semaphore signs
- Anti-queue control through infrared sensors
- Security photocells
- Command console (optional)

## Electrical System

Power Supply: 220V +/- 10%, 50Hz.  
Max absorbed power for each passage: 400 W.  
Working temperature: -10 °C / 55 °C.  
Motors: 24Vcc for reversible arms movement  
Both arms opening in case of emergency  
Accident prevention: photocells on the passage walls, both in entry and exit and control system to grant the adjustment of the engine torque

## Structure

Frame: AISI stainless steel

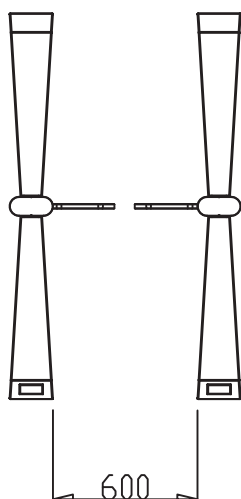
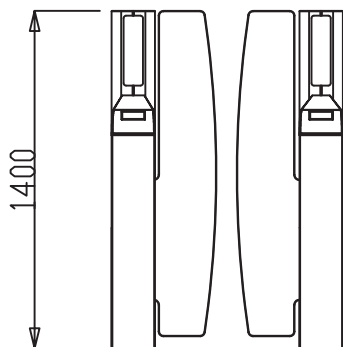
## Dimensions and weights

Weight: 150 Kg.

## MOTORIZED GATE

## Technical Features

### STANDARD VERSION



### DISABLED VERSION

